

# Napsin-A Expression, a Reliable Immunohistochemical Marker for Diagnosis of Ovarian and Endometrial Clear Cell Carcinomas

Fatemeh Nili<sup>1\*</sup>, Mansoureh Tavakoli<sup>1</sup>, Narges Izadi Mood<sup>2</sup>, Hana Saffar<sup>1</sup>, Soheila Sarmadi<sup>2</sup>

1. Department of Pathology, Imam Khomeini Hospital Complex, Tehran University of Medical Sciences, Tehran, Iran
2. Department of Pathology, Mohebb-e-Yas Women Hospital, Tehran University of Medical Sciences, Tehran, Iran

## KEYWORDS

Clear cell carcinoma,  
Diagnosis,  
Endometrium,  
Ovary,  
Napsin-A

Scan to discover online



**Main Subjects:**  
Gynecologic Pathology

Received 20 Aug 2019;

Accepted 23 Feb 2020;

Published Online 28 Feb 2020;

 [10.30699/ijp.2020.106598.2222](https://doi.org/10.30699/ijp.2020.106598.2222)

PMCID:

PMID:

## ABSTRACT

**Background & Objective:** Clear cell carcinomas (CCC) differ from other types of ovarian and endometrial carcinomas in biology, behavior and response to chemotherapy. Histopathologic diagnosis may be challenging in some situations which necessitates immunohistochemistry (IHC) assessment. In this study we investigated the diagnostic utility of Napsin-A in diagnosis of ovarian and endometrial CCCs.

**Methods:** Ovarian and endometrial CCC samples from 2013 to 2018 in 3 general and women's hospital in Tehran were re-evaluated by 2 expert pathologists. Forty-two samples were included as case and 42 non-clear cell carcinomas (Non-CCC) of ovary and endometrium were selected as control group. Based on IHC study tumors with sum intensity and percentage score  $\geq 2$  (at least 1+ staining in more than 1% of tumor cells) were considered positive.

**Results:** The prevalence of endometrial and ovarian CCC in the case group were 15 and 27 respectively. The tumors in the control group included 22 cases of endometrioid, 2 high grade papillary serous carcinoma (HGSC) of endometrium, 6 endometrioid and 12 HGSC of ovary. Napsin-A positivity was observed in 35 (83%) of CCCs while 7 (17%) samples including 3 out of 15 endometrial and 4 out of 27 ovarian CCCs were Napsin-A negative. No positive reaction was seen in control group. The overall accuracy, specificity and sensitivity of Napsin-A for diagnosis of ovarian and endometrial CCCs were 83%, 100% and 83%, respectively. Sensitivity for ovarian and endometrial CCCs were 85% and 80%, orderly.

**Conclusion:** Napsin-A is an accurate and reliable marker for distinction of CCCs from non-CCC in ovary and endometrium. A panel of antibodies may yield the highest diagnostic accuracy.

## Corresponding Information:

**Fatemeh Nili**, Department of Pathology, Imam Khomeini Hospital Complex, Tehran University of Medical Sciences, Tehran, Iran Email: [f-nili@sina.tums.ac.ir](mailto:f-nili@sina.tums.ac.ir)

Copyright © 2020. This is an open-access article distributed under the terms of the Creative Commons Attribution- 4.0 International License which permits Share, copy and redistribution of the material in any medium or format or adapt, remix, transform, and build upon the material for any purpose, even commercially.

## Introduction

Clear cell carcinoma (CCC) accounts for approximately 10% of ovarian and less than 5% of endometrial epithelial carcinomas (1,2). In ovary, the biology and clinical behavior of ovarian clear cell carcinoma (OCCC) is different from other epithelial tumors. Unlike high grade papillary serous carcinomas (HGSC), OCCC affects younger women in association with endometriosis and is frequently diagnosed in early stages (3). When adjusted for stage, OCCC has the worst prognosis in comparison with other epithelial carcinomas (4,5). Efficacy of platinum-based chemotherapy regimens is between 20 and 50% for OCCC compared with 60 to 80% for HGSC (3). In endometrium, clear cell carcinomas involve older patients and are diagnosed in higher stage of disease with worse prognosis compared with endometrioid or type I carcinomas (2,6). Diagnostic histopathological findings are similar in ovary and endometrial clear cell

carcinomas (ECCC). In most of the tumors, a mixture of solid, papillary and tubulo-cystic architectural patterns are seen. The lining epithelial cells are hobnail and/or cuboidal with clear and/or eosinophilic cytoplasm. Mitotic activity is variable but is usually low. High nuclear grade is infrequent (7). Although in most of the cases, histopathological findings are distinctive and characteristic, other types of endometrial and ovarian carcinomas can harbor clear cell changes and make diagnostic confusion (8,9). In a study by Han *et al.*, moderate agreement was observed in classification of the endometrial carcinomas with clear cell changes between the reviewers, where only 46% of original ECCC were accurately diagnosed (10).

In this study we evaluated the diagnostic utility of Napsin-A by immunohistochemistry (IHC) for ovarian and endometrial clear cell carcinomas.

## Materials and Methods

This study was conducted in Imam Khomeini Hospital Complex, Tehran, Iran. Due to scarcity of clear cell carcinoma cases, we designed a case-control study. The study was approved by the Ethics committee of Tehran University of medical Sciences (IR.TUMS.IKHC.REC.1397.304). After reviewing the pathology reports from 2013 to 2018 in 3 general and women's hospitals in Tehran, ovarian and endometrial clear cell carcinomas were re-evaluated by 2 expert pathologists. Forty-two CCC samples were included as case and 42 non-clear cell carcinomas (non-CCC) in ovary or endometrium were selected as control group. A 4µm thick section from relevant paraffin blocks were taken on charged slides and dried 40 minutes at 60°C. After deparaffinization and rehydration, heat induced epitope retrieval was performed using Master Diagnostica EDTA buffer (pH: 6) for 40 minutes at 37°C. After that, the slides were rinsed with 3-5 changes of distilled water followed by cooling at room temperature for 20 min. Peroxidase solution was used, 10 minutes at room temperature for blocking endogenous peroxidase. After incubation for 60 minutes with primary antibodies for Napsin-A (Master Diagnostica; Spain), Master Polymer Plus Detection System (HRP) was used for 20 minutes. Finally, the slides were counterstained with haematoxylin and mounted. The IHC scoring was performed based on the intensity of staining (0: negative, 1+: faint cytoplasmic granular, 2+: moderate granular, 3+: coarse cytoplasmic granular positivity) and percentage of positive tumor cells (0: no tumor cell, 1+: 1-25%, 2+: 25-50%, 3+: ≥50%). Tumors with sum score ≥2 were considered positive (Figure 1).

Data analysis was performed using SPSS 22.0 (IBM Inc., Chicago, Illinois, USA). Independent-Sample t-test and Chi-square were used for comparison of continuous variables and nominal and categorical variables respectively. The P-values less than 0.05 were considered statistically significant. Sensitivity, specificity and overall accuracy of Napsin-A were calculated using 2×2 tables.

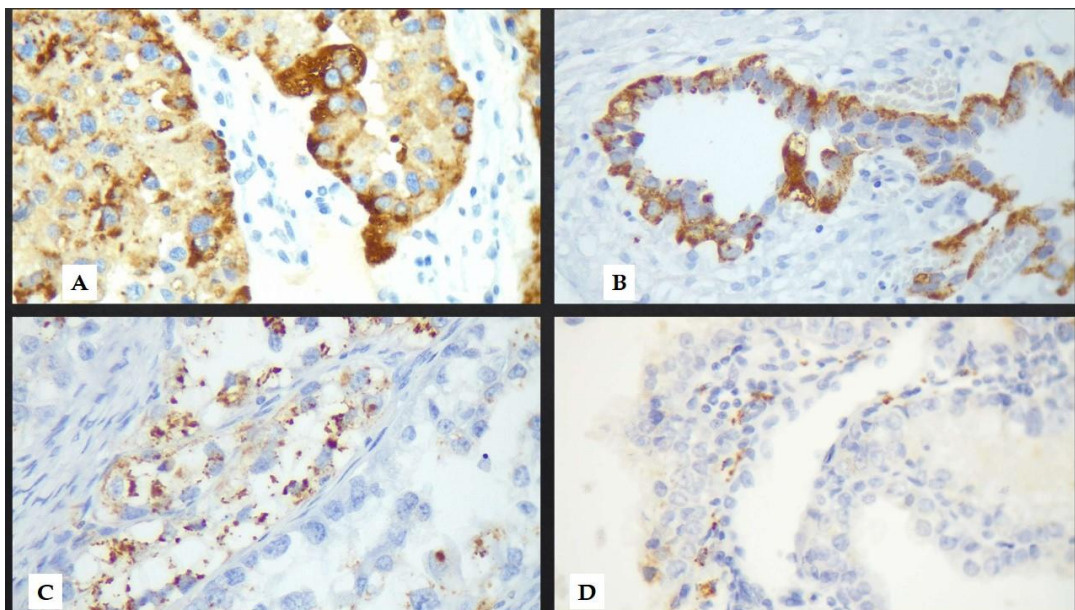
## Results

Of the CCC samples, 15 were ECCC and 27 samples were OCCC. Of the 42 non-CCC, 22 were endometrioid, 2 were papillary serous carcinoma of endometrium, 6 were endometrioid and 12 were HGSC of ovary. Mean age of the patients in CCC and non-CCC groups were 52.1 years and 57.3 years respectively ( $P=0.08$ ). Other clinicopathologic features including pathologic stage, myometrial invasion, ovarian surface involvement, omental involvement, lymph node metastasis and the difference between CCC and non-CCC cases were summarized in [Table 1](#).

On IHC study, 35 (83%) of CCCs showed positive reaction for Napsin-A. Seven samples (17%) including 3 out of 15 ECCC and 4 out of 27 OCCC were negative for Napsin-A. None of the non-CCC samples showed positive reaction for Napsin-A. The overall accuracy, specificity and sensitivity of Napsin-A for diagnosis of ovarian and endometrial CCCs were 83%, 100% and 83%, respectively. Sensitivity for OCCC and ECCCs were 85% and 80%, orderly.

In most of the cases with positive reaction, moderate to severe intensity of staining in more than 25% of the tumor cells were identified.

No significant statistical difference was identified in ovarian surface involvement, pathologic stage, omental involvement and lymph node metastasis in CCCs with and without immunostaining for Napsin-A ( $P>0.05$ ).



**Fig. 1.** (A and B) IHC stained slides (400x) showing strongly positive coarse (1+) cytoplasmic granules (3+), (C) moderate coarse and fine cytoplasmic granules (2+) and (D) fine cytoplasmic granules.

**Table 1.** Clinicopathological features of different ovarian and endometrial carcinoma subtypes in this study.

Clinicopathologic features	Clear cell carcinoma	Endometrioid carcinoma	Papillary serous carcinoma	P-value
<b>Histologic type</b>				
<b>Pathologic stage</b>				
<b>pT1</b>	22	22	3	0.59
<b>pT2</b>	12	4	4	
<b>pT3</b>	8	2	7	
<b>Ovarian surface</b>				
<b>Involved</b>	16	1	11	0.017
<b>Ruptured</b>	8	0	0	
<b>Free</b>	3	5	1	
<b>Myometrial invasion</b>				
<b>Less than 50%</b>	7	13	0	0.45
<b>More than 50%</b>	8	9	2	
<b>Omental involvement</b>				
<b>Involved</b>	5	3	10	0.02
<b>Free</b>	25	16	4	
<b>Lymph node metastasis</b>				
<b>Present</b>	8	0	2	0.02
<b>Absent</b>	18	20	8	

**Table 2.** Review of previous studies evaluating diagnostic accuracy of Napsin-A in ovarian and endometrial clear cell carcinoma.

Specificity	Sensitivity	Site	Sample size	Year	Author
<b>98%</b>	88%	endometrium	54(CCC), 49(EC), 17(PSC)	2014	Fadare (19)
<b>92.3% ovary 95.5% endometrium</b>	95.5% ovary 66.7% endometrium	Ovary and endometrium	22(CCC ovary), 15(CCC endometrium), 74( Non-CC)	2015	Iwamoto (20)
<b>100%</b>	83%	ovary	86(CCC), 13( clear cell adenofibroma), 101 (Non-CC)	2015	Yamashita (21)
<b>100%</b>	81.3%	ovary	16(CCC), 20(Non-CC)	2016	Sayar (14)
<b>84.2%</b>	66.7%	endometrium	6(CCC) 70(Non-CC)	2017	Al-Maghrabi (22)
<b>89.7%</b>	100%	ovary	25(CCC), 75( Non-CCC)	2018	Hanan (23)

Specificity	Sensitivity	Site	Sample size	Year	Author
90.9%	100%	Ovary	58(CCC), 90 (Non-CCC)	2018	Rekhi (24)
100%	85% ovary 80% endometrium	Ovary and endometrium	42(CCC[ 27 ovary, 15 endometrium]) 42(Non-CCC)	2019	Our study

## Discussion

Endometrial carcinoma is the most common gynecologic cancer in developed countries (11) and ovarian cancer is the fifth frequent tumor in women (12). Clear cell carcinoma is an uncommon subtype of malignant epithelial tumors in ovary and endometrium. Its biology, molecular features, clinical behavior and response to chemotherapy is different from other kinds of carcinomas, which necessitates its accurate diagnosis. Despite histopathological findings, the diagnosis may be challenging and IHC study is crucial. Similar to serous and endometrioid carcinomas, CCCs express CK7, B72.3 and BerEP4 while CA125 and vimentin are positive in approximately 50% of the cases. ER, PR and WT1 are typically negative in CCCs but expression of p53 and p16, which are intermediate between serous and endometrioid carcinomas, is variable (13). Hepatocyte Nuclear Factor- $\beta$  (HNF- $\beta$ ) is positive in 90 to 100% of CCCs but its specificity is only 54%. Alpha-methylacyl-Coa Racemase (AMACR) is a specific (specificity 99%) but less sensitive (sensitivity 63%) marker for CCC (14).

Napsin-A is a cytoplasmic aspartic protease, which is predominantly expressed in lung and kidney. In the lung, Napsin-A is expressed in type II alveolar pneumocytes and is involved in the synthesis of surfactant protein. In the kidney, Napsin-A is expressed in proximal tubules and is involved in lysosomal protein catabolism (15). Napsin-A is a well-established new marker for pulmonary adenocarcinoma and is considered to be superior to TTF-1 (16). Its expression in gynecologic CCCs and renal neoplasms has been the subject of some recent studies (14,15,17-24).

In the present study we found 100% specificity and 83% sensitivity for Napsin-A by IHC, for distinction of OCCC and ECCC from non-CCC. Our results are in concordance with previous studies, Table 2. Since CCCs are uncommon, we conducted a case-control study to participate a higher number of CCC cases. Inability to determine prevalence, positive predictive and negative predictive values is the limitation of our study. But as we know, case-control studies are superior to cross-sectional studies when the prevalence of the target disease is low and the diagnostic test is costly to perform (25). The results of our study were similar to the findings of the study performed by Yamashita *et al.*, which included the largest sample of OCCCs (86 samples) and non-CCC (101 samples) compared with other studies (21).

The role of Napsin-A in OCCC and ECCC is not

clear. In lung and kidney, expression of Napsin-A is reduced in high grade tumors with advanced clinical stages, therefore a tumor suppressor role has been proposed for this protein (23). Along with some other previous studies, we could not find a significant statistical difference between pathologic stage, omental involvement and lymph node metastasis in negative and positive samples. Hence larger scale studies are needed for this subject.

Fadare *et al.* recommended a panel of immunohistochemical markers including Napsin-A, HNF-1  $\beta$  and AMACR to obtain the highest sensitivity and specificity when CCC is a diagnostic consideration (26).

## Conclusion

Napsin-A is a sensitive and highly specific marker for ovarian and endometrial clear cell carcinoma.

## Acknowledgements

The study has been funded and supported by Tehran University of Medical Sciences (TUMS); Grant number 96-02-30-35314.

## Conflict of Interest

The authors declared no conflict of interest.

## References

- Reid BM, Permeth JB, Sellers TA. Epidemiology of ovarian cancer: a review. *Cancer Biol Med. Chinese Anti-Cancer Association*; 2017 Feb;14(1):9-32.
- Abdulfatah E, Sakr S, Thomas S, Al-Wahab Z, Mutch DG, Dowdy S, et al. Clear Cell Carcinoma of the Endometrium: Evaluation of Prognostic Parameters in a Multi-institutional Cohort of 165 Cases. *Int J Gynecol Cancer. NIH Public Access*; 2017;27(8):1714-21. [DOI:10.1097/IGC.0000000000001050]
- Tang H, Liu Y, Wang X, Guan L, Chen W, Jiang H, et al. Clear cell carcinoma of the ovary. *Medicine (Baltimore)*. 2018 May;97(21):e10881. [DOI:10.1097/MD.00000000000010881]
- Chan JK, Teoh D, Hu JM, Shin JY, Osann K, Kapp DS. Do clear cell ovarian carcinomas have poorer prognosis compared to other epithelial cell types? A study of 1411 clear cell ovarian cancers. *Gynecol Oncol*. 2008 Jun;109(3):370-6. [DOI:10.1016/j.ygyno.2008.02.006]
- Shu AC, Qin Z, Jotwani RA, Iasonos A, Leitao Jr MM, Konner JA, Aghajanian AC. Ovarian Clear Cell



- Carcinoma, Outcomes by Stage: The MSK Experience. *Gynecol Oncol.* 2015 ; 139(2): 236-241 [DOI:10.1016/j.ygyno.2015.09.016]
6. Soslow RA, Bissonnette JP, Wilton A, et al. Clinicopathologic analysis of 187 high-grade endometrial carcinomas of different histologic subtypes: similar outcomes belie distinctive biologic differences. *Am J Surg Pathol.* 2007; 31: 979-987. [DOI:10.1097/PAS.0b013e31802ee494]
  7. Fadare O, Zheng W, Crispens MA, Jones HWI, Khabele D, Gwin K, et al. Morphologic and other clinicopathologic features of endometrial clear cell carcinoma: a comprehensive analysis of 50 rigorously classified cases. *Am J Cancer Res.* 2013;3(1):70-95.
  8. Fadare O, Parkash V, Dupont WD, et al. The diagnosis of endometrial carcinomas with clear cells by gynecologic pathologists: an assessment of interobserver variability and associated morphologic features. *Am J Surg Pathol.* 2012; 36: 1107-1118 [DOI:10.1097/PAS.0b013e31825dd4b3]
  9. Gilks CB, Oliva E, Soslow RA. Poor interobserver reproducibility in the diagnosis of high grade endometrial carcinoma. *Am J Surg Pathol.* 2013;37:874-881 [DOI:10.1097/PAS.0b013e31827f576a]
  10. Han G, Soslow RA, Wethington S, Levine DA, Bogomolny F, Clement PB, et al. Endometrial Carcinomas With Clear Cells. *Int J Gynecol Pathol.* 2015 Jul;34(4):323-33. [DOI:10.1097/PGP.000000000000162]
  11. Felix AS, Yang HP, Bell DW, Sherman ME. Epidemiology of Endometrial Carcinoma: Etiologic Importance of Hormonal and Metabolic Influences. In: *Advances in experimental medicine and biology.* 2017. p. 3-46. [DOI:10.1007/978-3-319-43139-0\_1]
  12. Asadinejad E, Abdirad A, Nili F, Soleimani V. Middle East journal of cancer. Vol. 9, Middle East Journal of Cancer. Shiraz University of Medical Sciences; 2018. 300-309 p.
  13. Mutter GL, Prat JD. Pathology of the female reproductive tract. Churchill Livingstone. 3th Edition. 2014. 853 p.
  14. Sayar A, Ugras N, Adim SB, Atalay FO. Role of napsin A immunohistochemical staining in differentiating ovarian clear cell carcinoma from other ovarian epithelial tumors. *Int J Clin Exp Pathol.* 2016 Jan 1;9(9):9575-80.
  15. Zhu B, Rohan SM, Lin X. Immunoeexpression of napsin a in renal neoplasms. *Diagn Pathol. BioMed Central;* 2015 Mar 14;10(1):4. [DOI:10.1186/s13000-015-0242-z]
  16. Turner BM, Cagle PT, Sainz IM, Fukuoka J, Shen SS, Jagirdar J. Napsin A, a New Marker for Lung Adenocarcinoma, Is Complementary and More Sensitive and Specific Than Thyroid Transcription Factor 1 in the Differential Diagnosis of Primary Pulmonary Carcinoma: Evaluation of 1674 Cases by Tissue Microarray. *Arch Pathol Lab Med.* 2012 Feb;136(2):163-71. [DOI:10.5858/arpa.2011-0320-OA]
  17. Ordóñez NG. Napsin A expression in lung and kidney neoplasia: a review and update. *Adv Anat Pathol.* 2012;19:66-73. [DOI:10.1097/PAP.0b013e31823e472e]
  18. Bishop JA, Sharma R, Illei PB. Napsin A and thyroid transcription factor-1 expression in carcinomas of the lung, breast, pancreas, colon, kidney, thyroid, and malignant mesothelioma. *Hum Pathol.* 2010;41:20-25. [DOI:10.1016/j.humpath.2009.06.014]
  19. Fadare O, Desouki MM, Gwin K, Hanley KZ, Jarboe EA, Liang SX, et al. Frequent Expression of Napsin A in Clear Cell Carcinoma of the Endometrium. *Am J Surg Pathol.* 2014 Feb;38(2):189-96. [DOI:10.1097/PAS.0000000000000085]
  20. Iwamoto M, Nakatani Y, Fugo K, Kishimoto T, Kiyokawa T. Napsin A is frequently expressed in clear cell carcinoma of the ovary and endometrium. *Hum Pathol.* 2015 Jul;46(7):957-62. [DOI:10.1016/j.humpath.2015.03.008]
  21. Yamashita Y, Nagasaka T, Naiki-Ito A, Sato S, Suzuki S, Toyokuni S, et al. Napsin A is a specific marker for ovarian clear cell adenocarcinoma. *Mod Pathol. Nature Publishing Group;* 2015 Jan 11;28(1):111-7. [DOI:10.1038/modpathol.2014.61]
  22. Al-Maghrabi JA, Butt NS, Anfinan N, Sait K, Sait H, Marzouki A, et al. Infrequent Immunohistochemical Expression of Napsin A in Endometrial Carcinomas. *Appl Immunohistochem Mol Morphol.* 2017 Oct;25(9):632-8. [DOI:10.1097/PAI.0000000000000350]
  23. Alshenawy HA, Radi DA. Napsin-A, A Possible Diagnostic Marker for Differentiating Clear Cell Ovarian Carcinoma From Other High-grade Ovarian Carcinomas. *Appl Immunohistochem Mol Morphol.* 2017 Mar;1. [DOI:10.1097/PAI.0000000000000510]
  24. Rekhi B, Deodhar KK, Menon S, Maheshwari A, Bajpai J, Ghosh J, et al. Napsin A and WT 1 are useful immunohistochemical markers for differentiating clear cell carcinoma ovary from high-grade serous carcinoma. *APMIS. John Wiley & Sons, Ltd (10.1111);* 2018 Jan 1;126(1):45-55. [DOI:10.1111/apm.12784]
  25. Biesheuvel CJ, Vergouwe Y, Oudega R, Hoes AW, Grobbee DE, Moons KG. Advantages of the nested case-control design in diagnostic research. *BMC Med Res Methodol. BioMed Central;* 2008 Jul 21;8:48. [DOI:10.1186/1471-2288-8-48]
  26. Fadare O, Zhao C, Khabele D, Parkash V, Quick CM, Gwin K, et al. Comparative analysis of Napsin A, alpha-methylacyl-coenzyme A racemase (AMACR, P504S), and hepatocyte nuclear factor 1 beta as diagnostic markers of ovarian clear cell carcinoma: an immunohistochemical study of 279 ovarian tumours. *Pathology.* 2015 Feb;47(2):105-11. [DOI:10.1097/PAT.0000000000000223]

How to Cite This Article

Nili F. et al. Napsin-A Expression, a Reliable Immunohistochemical Marker for Diagnosis of Ovarian and Endometrial Clear Cell Carcinomas. *Iranian Journal of Pathology*, 2020; 15(2):